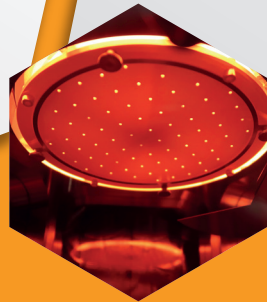
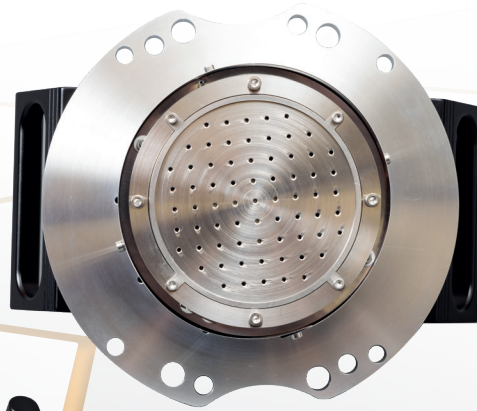


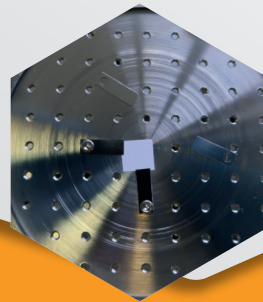


KORVUS TECHNOLOGY

SAMPLE STAGE



Heating" underneath:
4" Sample Stage
Rotating
Heating



Water-cooled
DC Bias Option
Simple operation

WWW.KORVUSTECH.COM

Unit 1 Kings Grove Industrial Estate | Maidenhead | Berkshire | SL6 4DP | UK
T: +44 1628 201329 E: info@korvustech.com

SAMPLE STAGE

Selecting the correct sample stage for a specific application is as important as choosing the correct deposition method. The features of the sample stage can affect the uniformity, the morphology and the resulting film composition.

The HEX base system comes with a static sample stage as standard which can accommodate samples up to 4" diameter. All sample stages can be equipped with either a manual or a motor-driven automatic shutter. The system features a convenient set of mounting posts to secure the stage when replacing samples without needing to clear additional work space.

Sample Rotation

The stage may be upgraded to one which incorporates sample rotation and heating. The rotation (0, 5- 28rpm as standard) improves the film uniformity and is recommended for samples with dimensions greater than 15mm and/or where good uniformity is important.

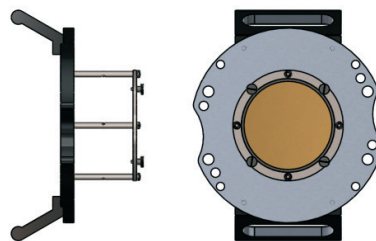
Sample Heating

The rotating stage has options for heating to 500°C which will result in improved film morphology for some materials during deposition or for post-annealing.

Sample Cooling

A rotating water-cooled sample stage can be employed to reduce unwanted uncontrolled temperature-rise in sensitive samples such as during the coating stage in lift-off processes.

Static Table

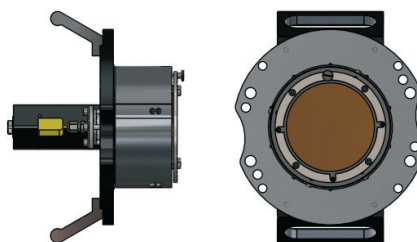


The static sample table is delivered as part of the HEX base system. The table accepts up to 4" wafers and multiple smaller samples.

Options

- Manual or Automatic Sample Shutter

Rotating/Heating Table



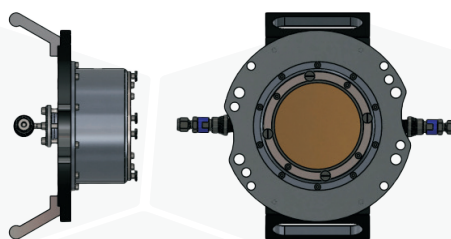
The rotating (and optional heating) sample stage dramatically improves deposition uniformity and is recommended for samples >15mm

- 5-28rpm rotation
- K-Type Thermocouple

Options

- 500° C heating option
- Manual or Automatic Sample Shutter
- DC Sample Bias

Cooled Table



The water-cooled stage allows temperature-sensitive samples to be coated without danger of thermally-induced damage.

Options

- 5-28rpm rotation
- Manual or Automatic Sample Shutter

